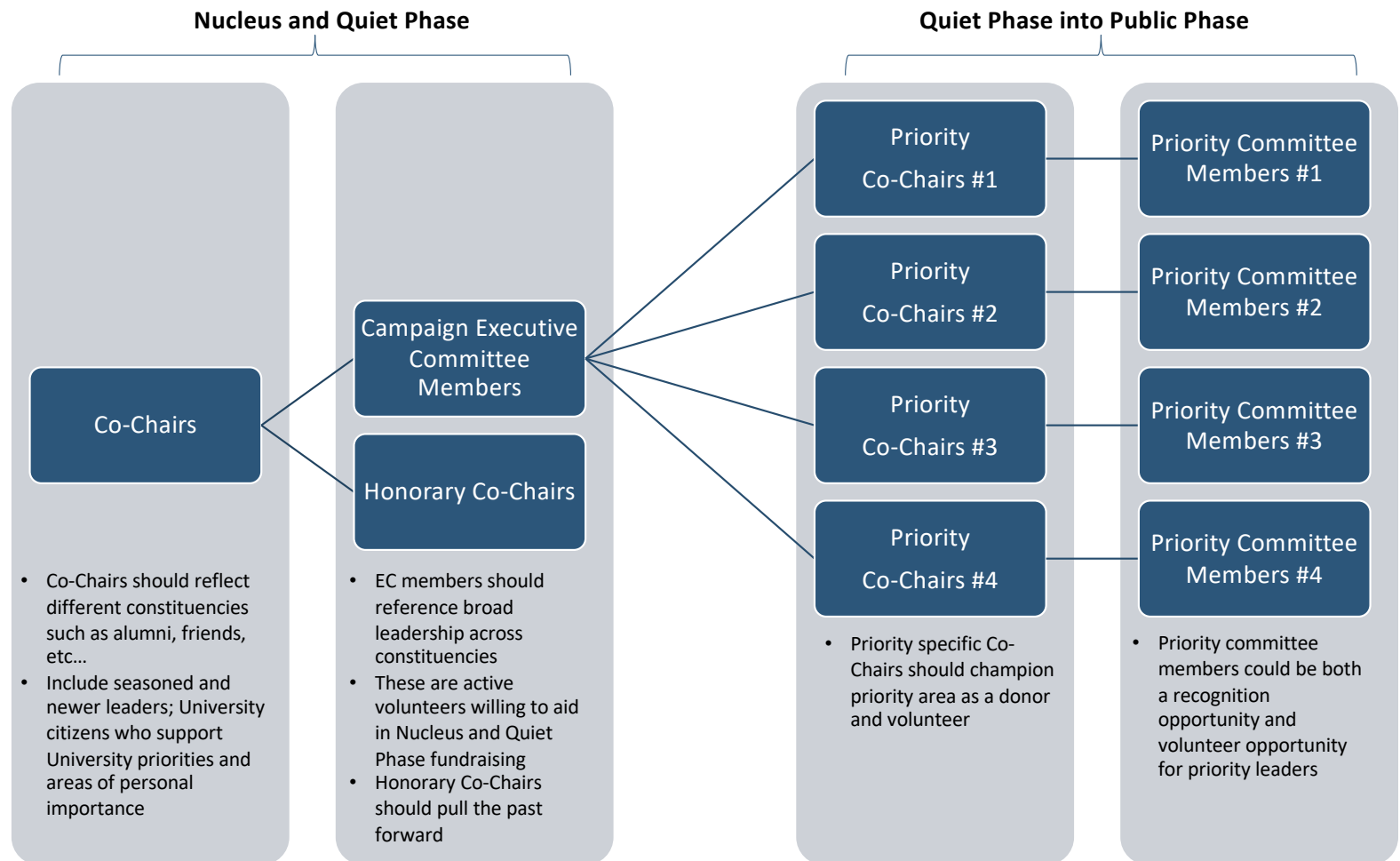


DRAFT VOLUNTEER COMMITTEE STRUCTURE



DRAFT VOLUNTEER CAMPAIGN STRUCTURE NOTES

- **Co-Chairs** need to be both philanthropic leaders but also strong volunteers and representative of the various constituencies of University:
 - Include alumni leadership from early classes and more recent
 - Include friend leadership
 - Potential parent representation (perhaps alumnus/a that is a parent)
 - Including School representation
- **Honorary Chairs** should bring the past into the future.
- **Executive Committee** is active and soliciting throughout the quiet phase and needs to lean towards:
 - University citizens
 - Representative of different constituencies and/or geographies (international representation needed)
 - Will make a substantial campaign commitment commensurate with capacity (7-figures+)
- **Priority Co-Chairs and Committees** are preferable to school/unit-based committees to ensure “One University” approach to the campaign and aligned with highest-level University Priorities. Should include representative of the academic structure of University.
- **Regional (host) Committees** could be formed on ad-hoc basis to serve as host committees for early campaign activity and could transition to recognition opportunities during public phase.
- **Overall structure** needs to align with internal capacity to manage and execute.